



# The Drew

4 Bedrooms | 2.5 Bathrooms | 2-Car Garage | 1,558+ SF



FEDERAL



FEDERAL WITH  
OPTIONAL 4TH BEDROOM



EASTERN SEABOARD



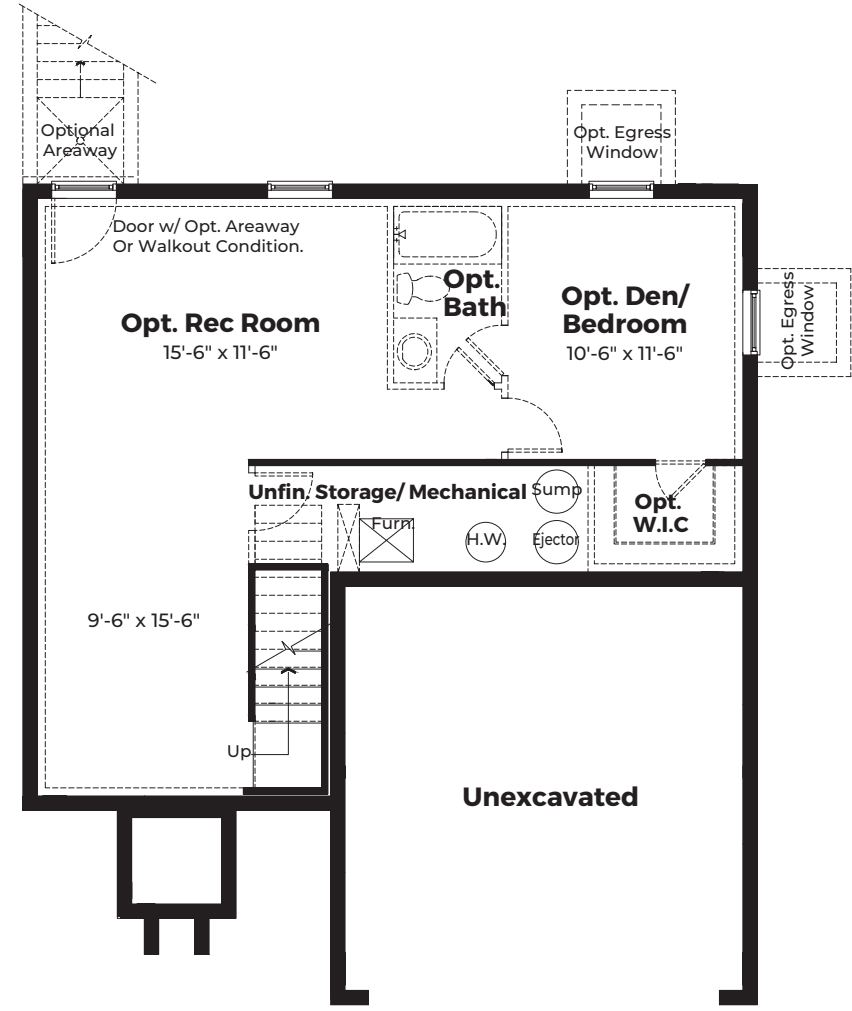
EASTERN SEABOARD WITH  
OPTIONAL 4TH BEDROOM



CRAFTSMAN



CRAFTSMAN - WITH OPTIONAL 4TH BEDROOM



Optional Finished Basement

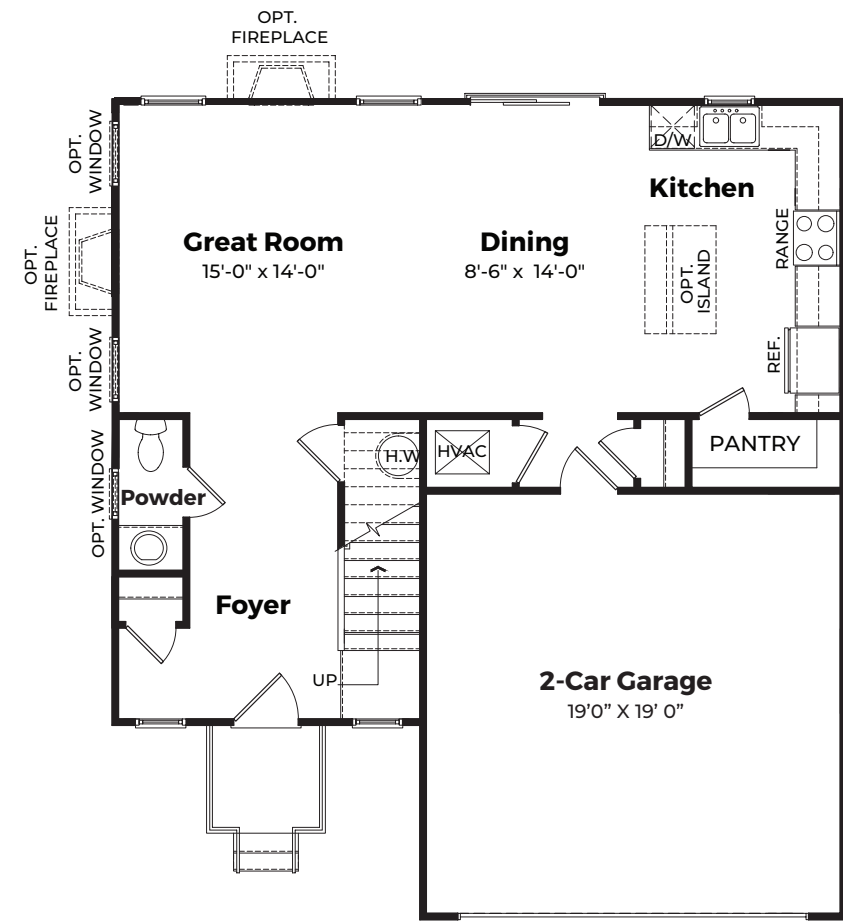
FOUNDATION

**ATLANTIC**  
BUILDERS

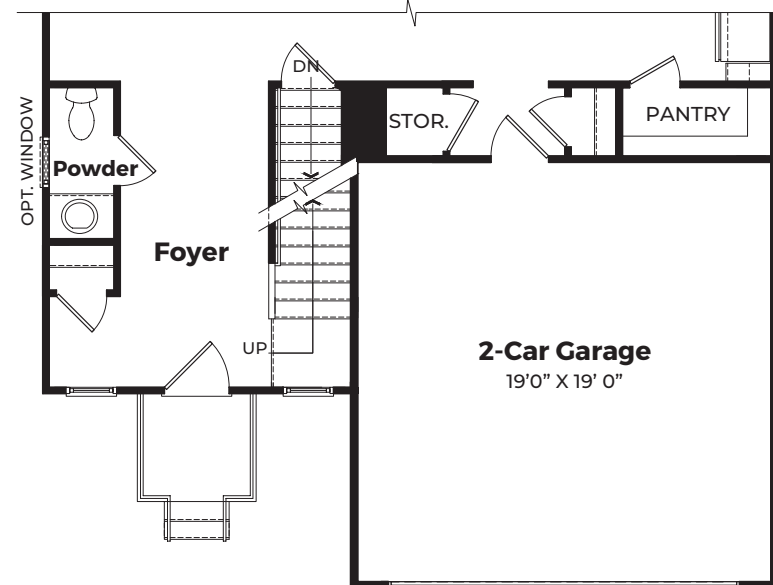
ATLANTICBUILDERS.COM

\*These renderings and floorplans are conceptual only. Actual details may vary. This insert is for illustrative purposes only. Atlantic Builders' continuing research and development program means specifications and plans are subject to change without notice. Standard features vary per community. Please consult Community Sales Manager for details.

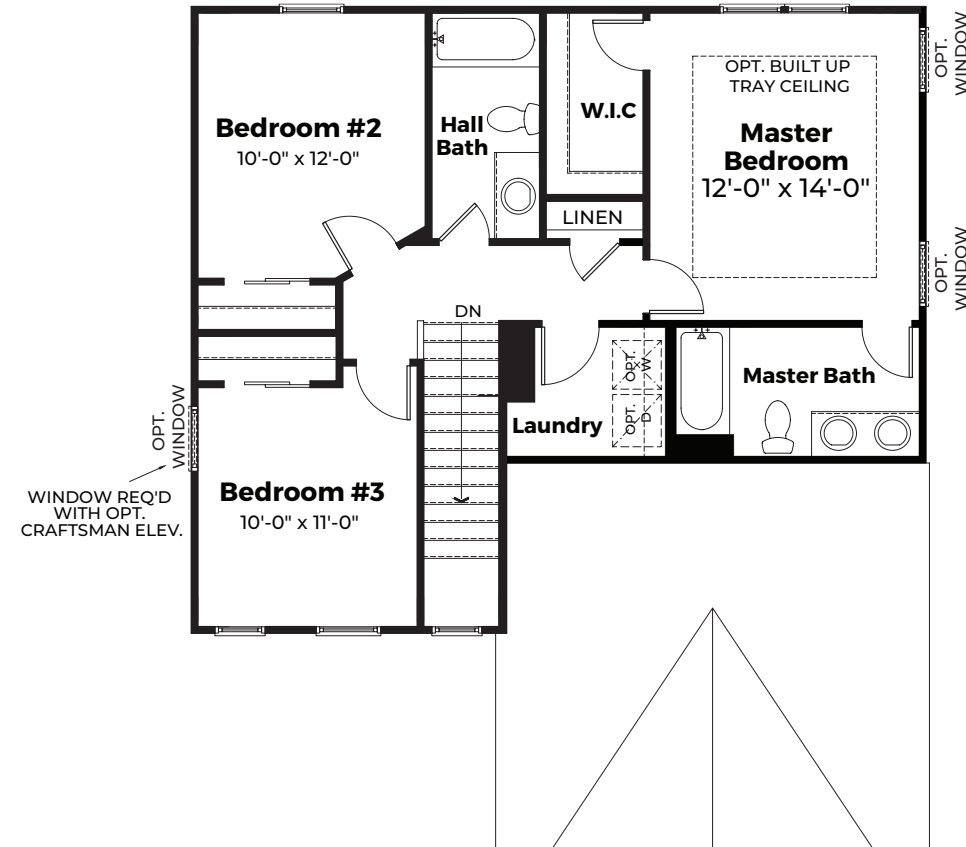
BASE PRICE .....	
HOMESITE NUMBER .....	
HOMESITE PREMIUM .....	
OPTIONS .....	
TOTAL .....	



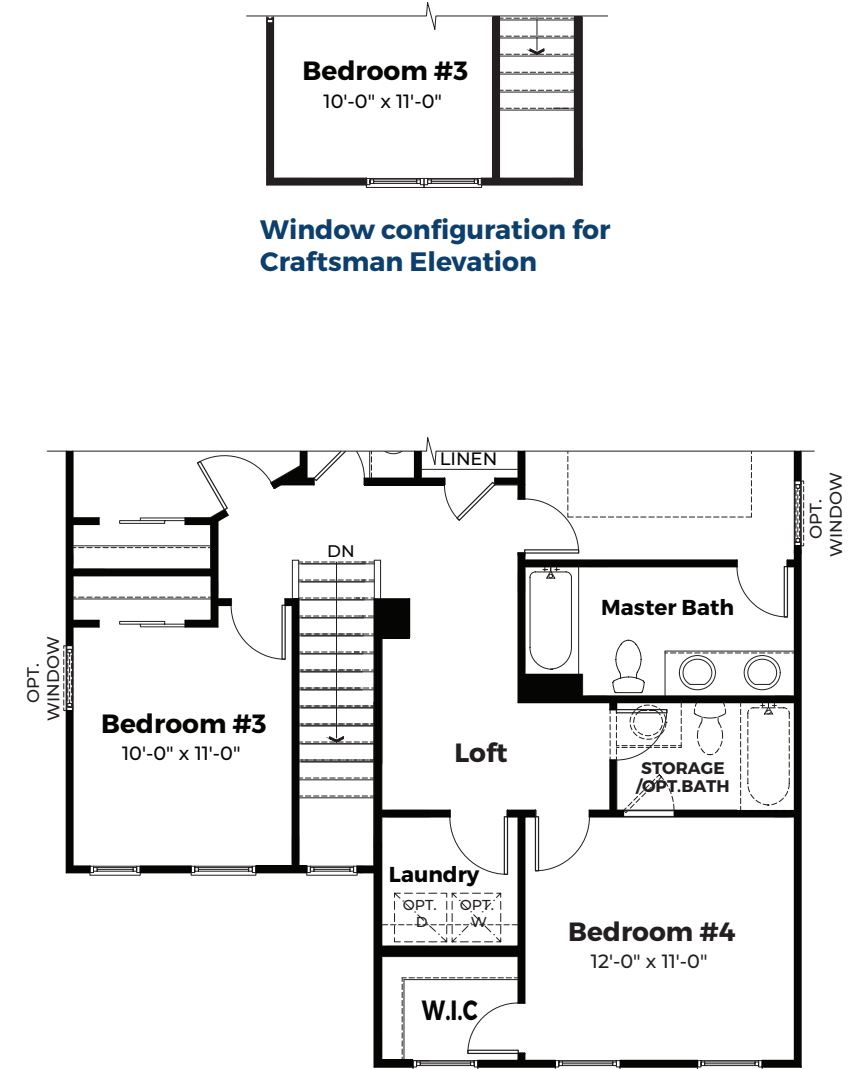
Partial Main Level w/ Opt. Basement



MAIN LEVEL



UPPER LEVEL



UPPER LEVEL OPTIONS

Window configuration for Craftsman Elevation

Partial Second Floor with Fourth Bedroom